

# **SPECIAL EDUCATION PROFESSIONALS**

## **REPORT FOR WERELDBURGERSCHAP ZWEVEGEM**



## **CAPACITY BUILDING FOR THERAPISTS AND SPECIAL NEEDS TEACHERS**

**INTERN MEMBERS SEP**

**2025**



## 1. INTRODUCTION

SEP received 1890 Euro from Wereldburgerschap Zwevegem in January 2025. The money donated was used to fund the SEP Project on: Trans-disciplinary training for the intern members and partly for the Training of Trainers (ToT).

## 2. SUMMARY OF EXPENDITURE

### 2.1 Trans-disciplinary Intern Training 7-18 April 2025

To ensure that all members are confident in practicing trans-disciplinary therapy interventions, aligned with SEP's mission, SEP organizes an annual **trans-disciplinary training** for newly graduated professionals who join the organization.

#### Objectives of the Trans-Disciplinary Training:

1. **Develop and strengthen professional skills:** The primary aim of the training is to enhance knowledge, skills, and abilities across various professional domains. This cross-disciplinary approach ensures that professionals from different backgrounds, such as occupational therapy, speech therapy, physical therapy, and special education, collaborate effectively.
2. **Promote professionalism:** By exposing professionals to different fields and approaches, the training fosters a deeper understanding of holistic care. This helps SEP maintain a high level of professionalism in delivering interventions for children with disabilities.
3. **Resource access:** SEP facilitates access to essential resources required for working with children with disabilities. These resources could include specialized equipment, training materials, and access to best practices in child development and disability care.

#### Topics in Trans-disciplinary Approach:

1. Introduction
2. Assessment
3. Functional goal setting
4. Classification of Cerebral Palsy
5. Therapy equipment modification
6. Handling & positioning
7. Passives, gait and joint mobilization
8. Case studies and evaluation
9. Sensory integration
10. Play
11. Autism
12. Communication
13. Feeding
14. Behavior modification
15. Managing parents' expectations and giving advice to communities
16. Evaluation and implementation plan

By providing this comprehensive training, SEP ensures that its professionals are well-prepared to deliver integrated and high-quality care, advancing the well-being of children with disabilities and reinforcing SEP's commitment to collaborative, family-centered interventions.

In 2025 the training was held at First Steps School. This location was given for free. The training was attended by 22 newly recruited intern members: 17 Occupational therapists, 2 physiotherapists and 3 special needs teachers.

The training was a remarkable blend of practical application and active participation, creating an enriching and engaging learning experience.

The interns who participated are since receiving more practical training in trans-disciplinary approach in the SEP projects under supervision of the SEP training team.

Total cost of the training was **Kshs 233,637/=** which included facilitation fees, training materials, lunch and snacks.



**Assessment**



**Importance of Play during therapy interventions**





**Sensory Integration part 1**



**Positioning and Handling**



**Energizer activity**



## 2.2. Follow-Up Training

### 2.2.1. Sensory Integration II on 9 August 2025

In addition to practical training and discussing case-studies in the SEP projects on a weekly basis, the interns received further training on:

**Sensory Integration II** – this training was held at Rainbow School. Eleven interns participated and got to: have a recap of Sensory Integration 1; learn various interventions for each sensory system; discover the types of protocols of Sensory Integration intervention; have group discussions and practical sessions on activities that can be used for children with disabilities, share experiences on interventions, and question and answer session.

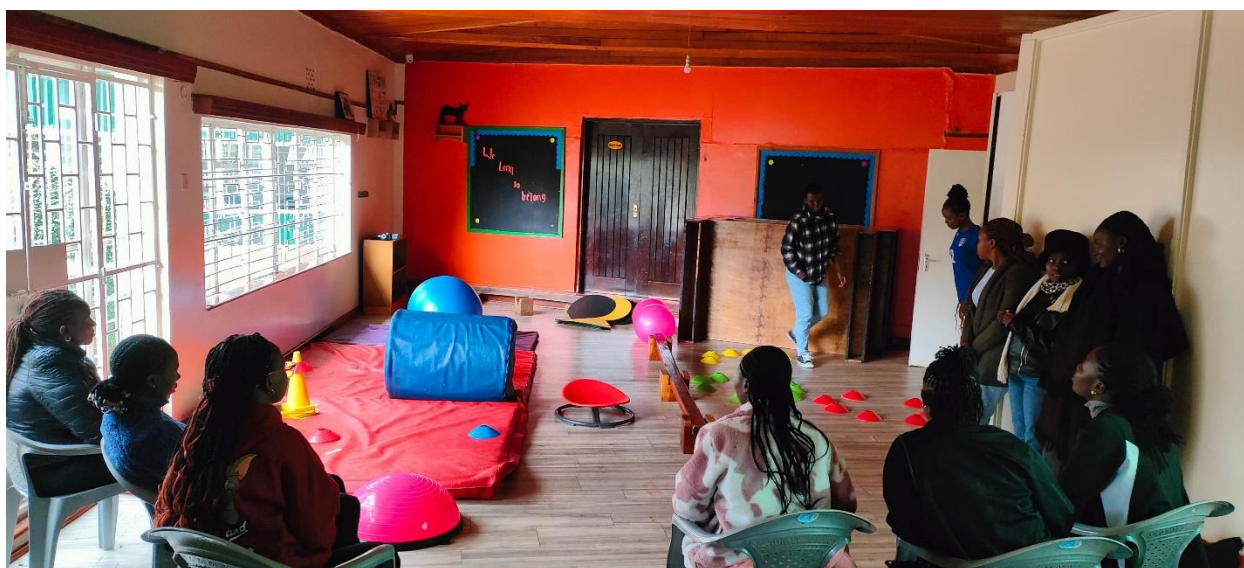
Total cost of the training was **Kshs 38,920/=** which included facilitation fees, training materials, and meals.



*Recap of Sensory Integration session 1*



*Practical sessions*



*Group work and presentations*

### 2.2.2. Splinting 26 August

The interns requested to have a training on splinting which took place in the partner organisations. Nine interns participated in this training.

The facilitation fee is part of the SEP contribution and is covered through the trainer's salary.



### 2.2.3. Reflexes 22 November

Reflexes are an integral part of development, however if retained past the required developmental age, they can hinder the progression of functional performance. This workshop focused on revision of the neonatal, primitive and pathological reflexes, their function, testing, consequences in case retained and reflex inhibition strategies. The participants were guided on ways to identify retained reflexes effects in their specific domain of practice be it in occupational therapy, physiotherapy, or special needs education. 12 interns participated.





## 2.3. Training of Trainers (ToT)

The ToT is open to second year interns and first year full members. The main goal of the ToT model is to prepare instructors to present information effectively, respond to participant questions, and lead activities that reinforce learning. Other goals include ensuring that trainers can:

- Direct participants to supplementary resources and reference materials.
- Lead discussions

### 2.3.1. Training of Trainers session 2

SEP organized session 2 of the ToT on the 1st of May. This full day session focused on the dynamics of the audience, difficult participants and how to address them, and navigate difficult questions. The afternoon concentrated on “Adult Learning Theories”. They were requested to prepare a short Power Point Presentation to present during the next session after receiving the notes of session 3 which concentrated on designing content.



### 2.3.2. Training of Trainers session 3

SEP organized session 3 of the ToT on the 17th of May. It started with a quick recap about the previous session. The main goal of the ToT 3 is to guide the trainer on designing content, making session plans, formulate goals and objectives, presentation methods, and use of low and high technology.

In the afternoon each participant presented their topic with a Power Point Presentation. The other participants and the facilitators gave constructive feedback. Progress in presenting was shared.





As SEP received more money this time the facilitation fees for these 2 sessions were paid by the donor contribution, which came to **56,000/=**.

### 3. FINANCIAL REPORT

The following is a report of what SEP has achieved with the aid of the donation:  
Donation Received **1.890 Euro - 261,387 Kshs** (at exchange rate 138.3)

Activity	Expenses Kshs	Expenses Euro
<b>DONOR CONTRIBUTION</b>		
Facilitation fees training	91,000	658
Training materials	2,880	21
Hall hire	/	/
Meals: lunch, tea	42,757	309
Transport	5,000	36
<b>Refresher days</b>		
Facilitation fees	28,000	202,5
Training materials	9,750	70,5
Meals	27,170	196,5
<b>Training of Trainers</b>		
Facilitation fees	56,000	405
<b>TOTAL</b>	<b>262,557</b>	<b>1.898,5</b>
<b>Balance Donor funds</b>	<b>(1,170)</b>	<b>(8,5)</b>

SEP CONTRIBUTION		
Hall Hire	/	
Meals	50,000	361,5
Facilitation fees	42,000	304
Administration	16,627	120
<b>TOTAL</b>	<b>108,627</b>	<b>785,5</b>

The total spent on the activities comes to KSh. **262,557** (1.898,5 Euro) donor funds and Kshs. **108,627** (785,5 euro) SEP contribution.

SEP would like to thank you for your very generous donation. It has gone a long way in helping to support children with disabilities and their families in Kenya.

For any questions or clarification regarding the donation, please feel free to contact us at the SEP office at Kitusuru 2.5B. Tel: +254 733 267869; E-mail: [SEP\\_professionals@yahoo.com](mailto:SEP_professionals@yahoo.com).

Yours Sincerely,  
Karolien Remmerie  
**Director – SEP**